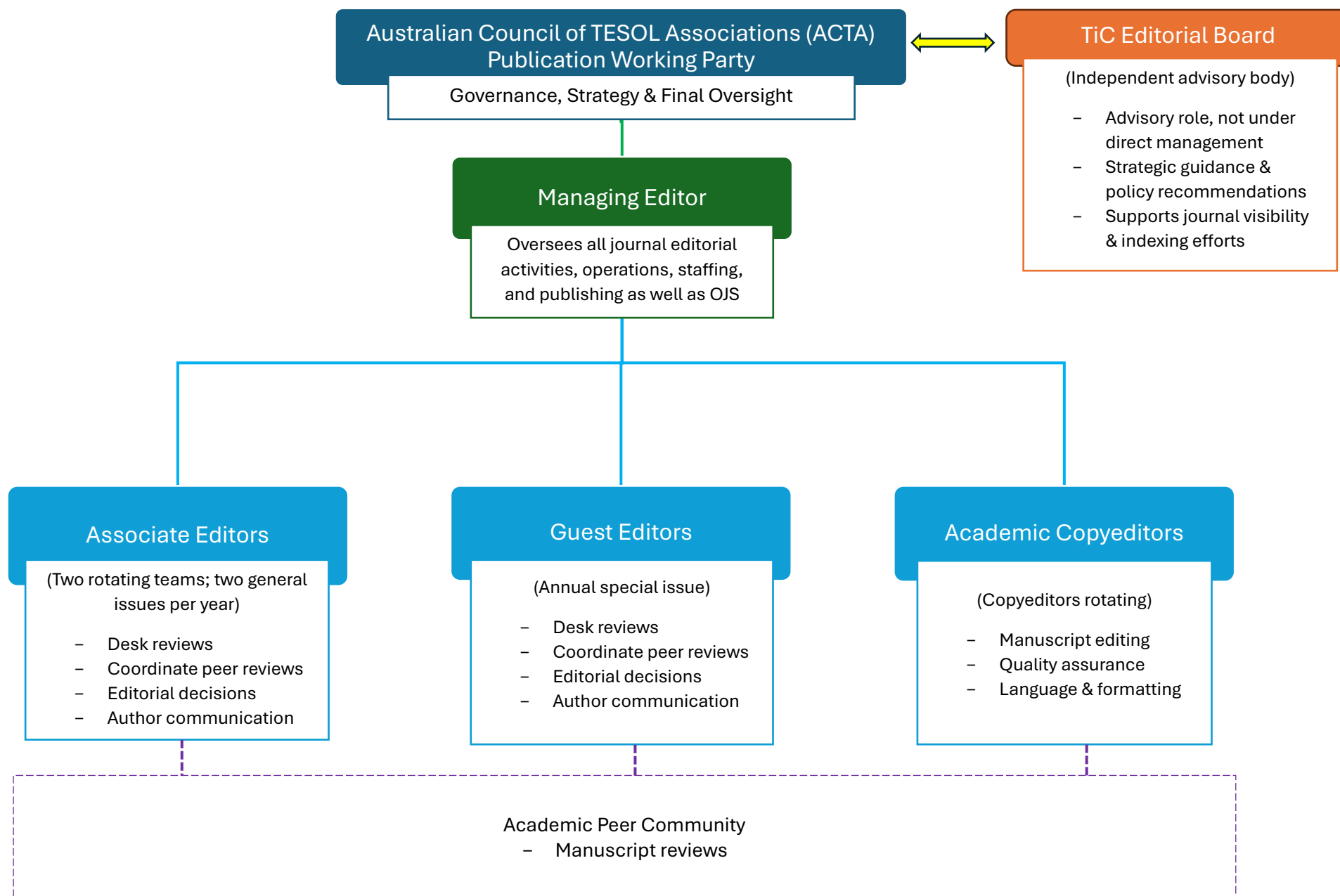


TESOL in Context – The Organisational Chart – 2025 v3



Explanation of roles in this org chart

ACTA Publication Working Party:

- Provides the top editorial oversight, governance, and strategic direction.
- Acts as the ultimate decision-making authority for the journal, fulfilling an Editor-in-Chief role chaired by ACTA President or their delegate.
- Reports directly to the ACTA Council.

Editorial Board:

- Acts as an independent advisory body of TESOL/EALD experts and researchers from around the world.
- Provides strategic guidance and recommendations independently from the Managing Editor.
- Supports TiC's reputation, visibility, and indexing efforts.

Managing Editor:

- Reports directly to the ACTA Publication Working Party.
- Oversees all day-to-day operations, editorial decisions, staffing, budget, and publication processes as well as the Open Journal System (OJS).
- Manages associate editors, guest editors, and academic copyeditors.
- Coordinates communication with authors, reviewers, and internal/external stakeholders.

Associate Editors:

- Handle desk reviews, peer-review coordination, manuscript decision-making, and communication for general issues.
- Two rotating teams, each responsible for one general issue per year.

Guest Editors:

- Manage the full editorial process of annual special issues.
- Work closely with Managing Editor for consistency of editorial standards.

Academic Copyeditors:

- Copyeditors rotating copyediting responsibilities.

***TESOL in Context* – The Organisational Chart – 2025 v3**

- Ensure manuscripts meet high academic writing and formatting standards.